



Whitegate Way, Tadworth

The **PERSONAL** Agent

Offers In Excess Of £800,000 Freehold

- Cul de sac location
- Stunning open planned kitchen/dining room with bi folding doors leading to garden
- Five spacious double bedrooms
- Contemporary en suite and shower rooms
- South westley garden with cabin
- Ample amount of off street parking
- No onward chain
- Within easy reach of an array of well regarded local schools

Personal Agent is delighted to present this superbly refurbished detached home to the market.

Offering generous and versatile accommodation throughout, this impressive property boasts five/six spacious bedrooms, three beautifully appointed bathrooms, and a stunning modern open-plan kitchen/dining/family area, perfect for contemporary living and entertaining.

Finished to a high standard, the home combines style, comfort, and practicality, making it ideal for growing families or those seeking flexible living space.

Set within a desirable residential location, this impressive detached home has been comprehensively remodelled and extended to create a substantial and beautifully finished family home approaching 2,000 sq ft.

The property has been thoughtfully enlarged with a double-storey side extension, rear extension, loft conversion and garage conversion, resulting in flexible accommodation arranged over



three floors. The generous frontage provides a triple-width driveway, offering extensive off-street parking.

The ground floor centres around a striking open-plan kitchen, dining and living space designed for modern family life. Featuring sleek cabinetry, integrated appliances, underfloor heating and bi-fold doors opening directly onto the garden, it is a bright and sociable hub of the home. A separate lounge to the front offers a more private retreat, while a utility room, contemporary cloakroom, and an additional reception room, ideal as a study, playroom or sixth bedroom, complete the ground floor layout.

To the first floor, the principal bedroom enjoys its own stylish en suite bathroom, accompanied by two further double bedrooms and a well-appointed family bathroom.

The top floor adds further versatility, incorporating two additional double bedrooms, a modern shower room and a

useful study area, perfectly suited to home working or guest accommodation.

Outside, the south west facing garden provides a private and sunny setting, with a full-width patio leading to lawned areas. A detached garden room with power, lighting and bi-fold doors offers an excellent space for entertaining, a home office or gym.

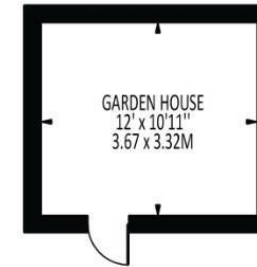
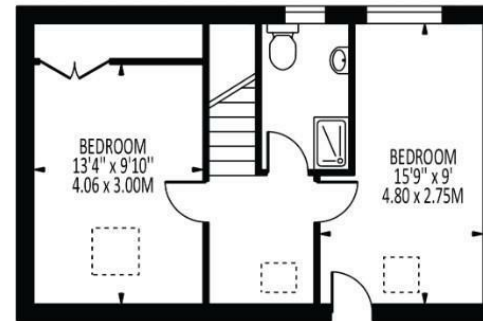
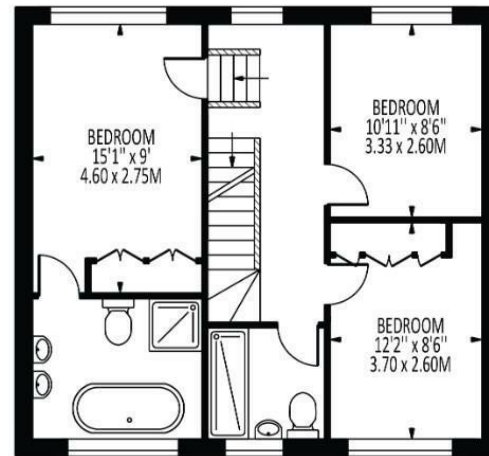
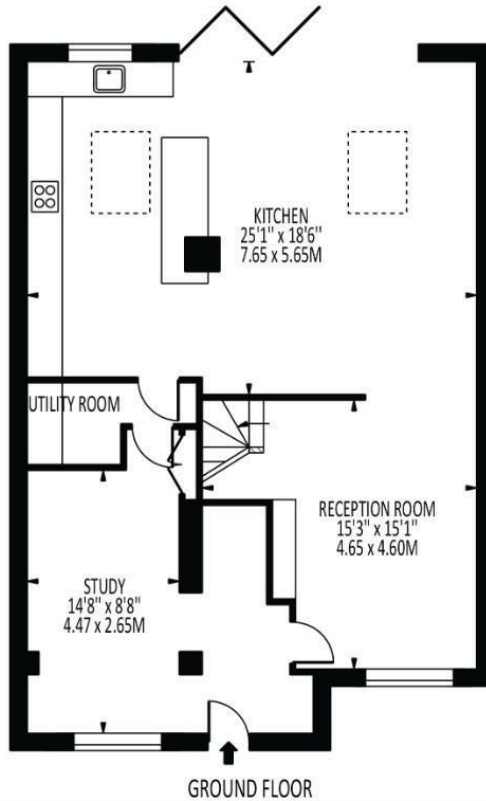
Whitegate Way is a small, well regarded cul de sac development positioned perfectly between Tattenham Corner and Tadworth Village, both of which offer an excellent selection of shops, cafés, and restaurants. For commuters, both areas provide rail links to London Bridge, with a journey time of approximately 50 minutes.

In our opinion, this delightful home represents excellent value and must be viewed to be fully appreciated. Whether you are stepping onto the property ladder or searching for a low maintenance retreat, this home stands out as a superb find.





The **PERSONAL** Agent



Whitegate Way

Total Area: 2037 SQ FT • 189.24 SQ M
(Including Garden House)
Garden House Area : 131 SQ FT • 12.18 SQ M

Energy Efficiency Rating		Current	Potential	
Very energy efficient - lower running costs				
(92 plus)	A	75	78	
(81-91)	B			
(69-80)	C			
(55-68)	D			
(39-54)	E			
(21-38)	F			
(1-20)	G			
Not energy efficient - higher running costs				
England & Wales		EU Directive 2002/91/EC		

Disclaimer: For Illustration Purposes only
This floor plan should be used as a general outline for guidance only and does not constitute in whole or in part an offer of contract.
Any intending purchaser or lessee should satisfy themselves by inspection, searches, enquiries and full survey as to the correctness of each statement.
Any areas, measurements or distances quoted are approximate and should not be used to value a property or be the basis of any sale or let.

EPSOM OFFICE

2 West Street
Epsom, Surrey, KT18 7RG
01372 745 850

STONELEIGH/EWELL OFFICE

62 Stoneleigh Broadway
Stoneleigh, Surrey, KT17 2HS
020 8393 9411

BANSTEAD OFFICE

141 High Street
Banstead, Surrey, SM7 2NS
01737 333 699

TADWORTH & KINGSWOOD OFFICE

Station Approach Road
Tadworth, Surrey, KT20 5AG
01377 814 900

LETTINGS & MANAGEMENT

157 High Street
Epsom, Surrey, KT19 8EW
01372 726 666

The Personal Agent Ltd. Registered office: 2A Boston Rd, Henley-on-Thames RG9 1DY.
Registered in England No. 4398817.



The
PERSONAL
Agent

Please Note: Whilst every attempt has been made to ensure the accuracy of the floorplans contained here, measurements of doors, windows and room areas are approximate and no responsibility is taken for any error, omission or mis-statement. These plans are for representation purposes only and should be used as such by and prospective purchaser. The services, systems and appliances listed in the specification have not been tested by The Personal Agent and no guarantee as to their operating ability or their efficiency can be given. All images and text used to advertise our properties are for the sole use of The Personal Agent Ltd.

